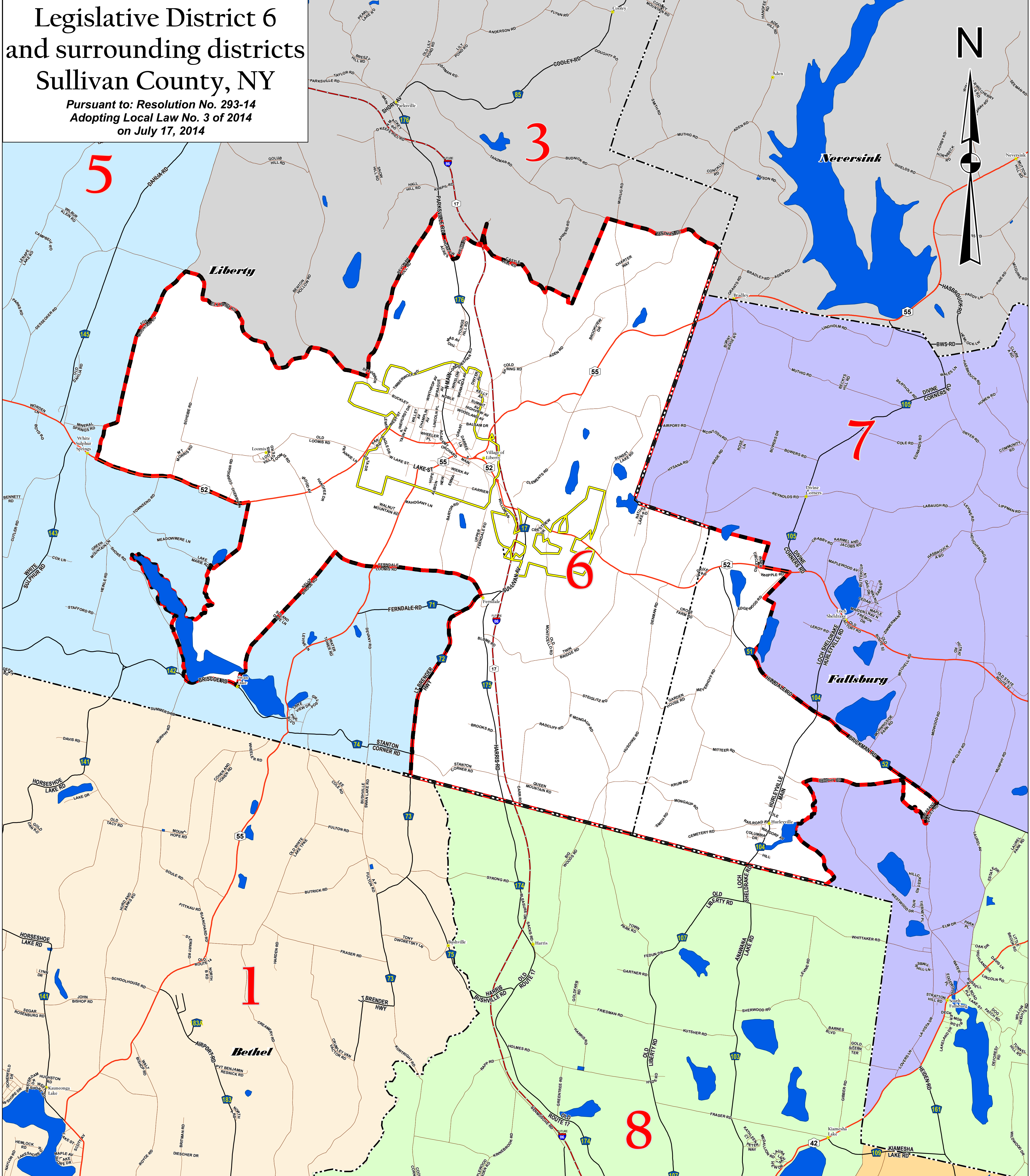


# Legislative District 6 and surrounding districts Sullivan County, NY

Pursuant to: Resolution No. 293-14  
Adopting Local Law No. 3 of 2014  
on July 17, 2014



The Legislative District boundaries on this map were drawn pursuant to a plan entitled: "Sullivan County Proposed Legislative Redistricting Plan" Created by: Skyline Consulting 3050 Skyline Drive Schenectady, NY 12306

**Sullivan County Real Property Tax Services**  
100 North Street, Monticello, NY 12701  
(845) 807-0221- Fax: (845) 807-0232  
0 0.25 0.5 Miles

DATE: 6/16/2015  
Technician: Christopher J. Knapp

**Legislative District of interest is highlighted with a heavy red & black outline.**

DISCLAIMER: SULLIVAN COUNTY MAKES NO REPRESENTATIONS AS TO THE ACCURACY OF THE INFORMATION IN THE MAPPING DATA. SULLIVAN COUNTY SPECIFICALLY PROVIDES THIS INFORMATION AS IS. SULLIVAN COUNTY EXPRESSLY DISCLAIMS RESPONSIBILITY FOR DAMAGES OR LIABILITY, WHATSOEVER, THAT MAY ARISE FROM THE USE OF THIS MAP.

**Legislative districts are labeled in red.**

**Legend**

District 1	District 6	Towns	Interstate Highways
District 3	District 7	Villages	State/Federal Routes
District 5	District 8	Hamlets	County Roads
	District 9		Local Roads
			Water Bodies