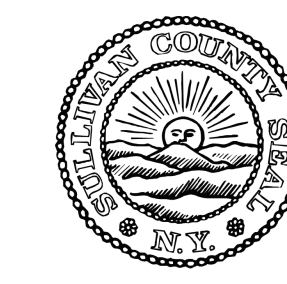
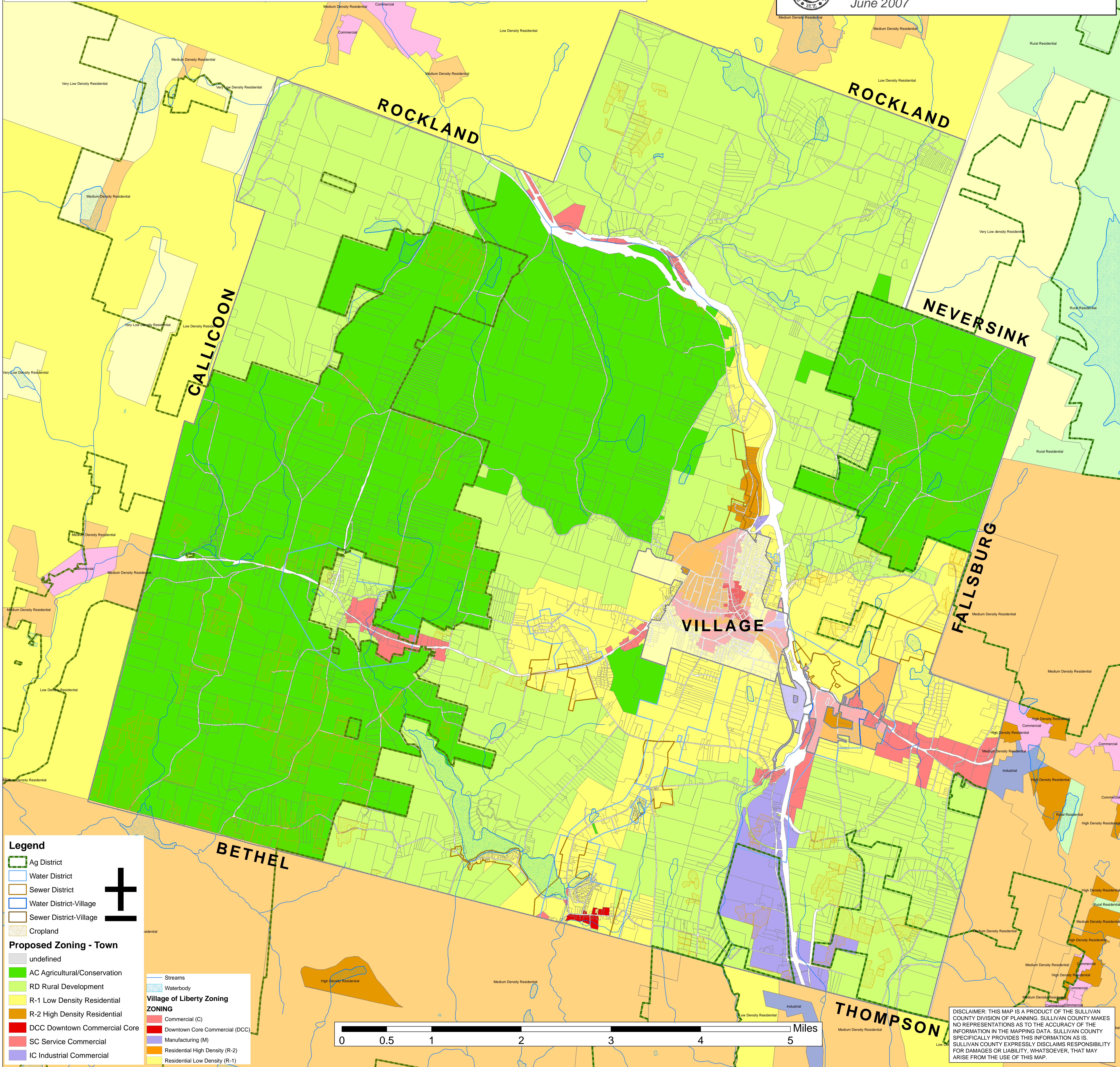


Liberty Proposed Zoning Draft - June 28, 2007



Prepared by the Sullivan County
Division of Planning and Environmental Management
June 2007



Legend

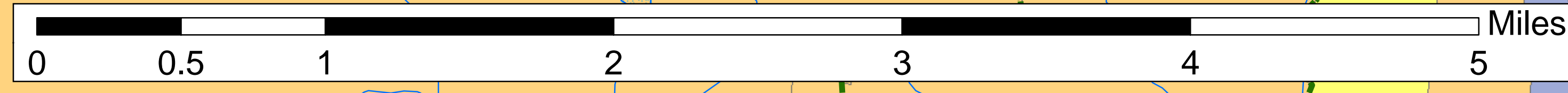
- Ag District
- Water District
- Sewer District
- Water District-Village
- Sewer District-Village
- Cropland

Proposed Zoning - Town

- undefined
- AC Agricultural/Conservation
- RD Rural Development
- R-1 Low Density Residential
- R-2 High Density Residential
- DCC Downtown Commercial Core
- SC Service Commercial
- IC Industrial Commercial

Village of Liberty Zoning

- Streams
- Waterbody
- Commercial (C)
- Downtown Core Commercial (DCC)
- Manufacturing (M)
- Residential High Density (R-2)
- Residential Low Density (R-1)



DISCLAIMER: THIS MAP IS A PRODUCT OF THE SULLIVAN COUNTY DIVISION OF PLANNING. SULLIVAN COUNTY MAKES NO REPRESENTATIONS AS TO THE ACCURACY OF THE INFORMATION IN THE MAPPING DATA. SULLIVAN COUNTY SPECIFICALLY PROVIDES THIS INFORMATION AS IS. SULLIVAN COUNTY EXPRESSLY DISCLAIMS RESPONSIBILITY FOR DAMAGES OR LIABILITY, WHATSOEVER, THAT MAY ARISE FROM THE USE OF THIS MAP.