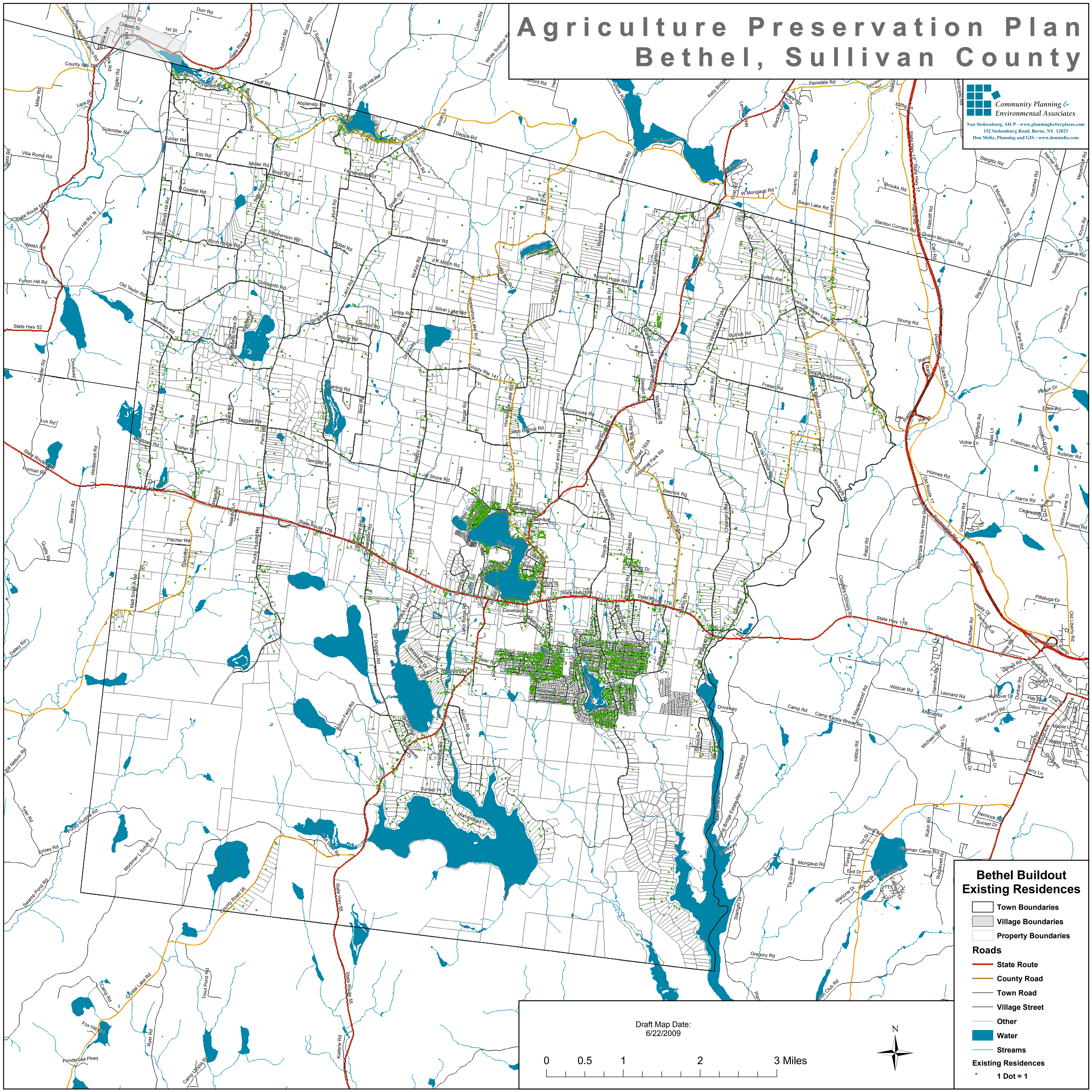


Agriculture Preservation Plan Bethel, Sullivan County

Community Planning & Environmental Associates
 Nan Stolzenburg, AICP - www.planningbetterplaces.com
 152 Stolzenburg Road, Berne, NY 12023
 Don Meltz, Planning and GIS - www.donmeltz.com

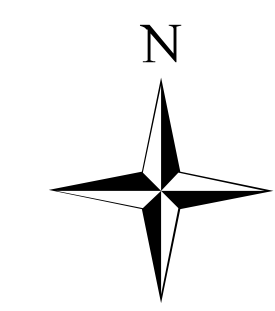


Bethel Buildout Existing Residences

- Town Boundaries
- Village Boundaries
- Property Boundaries
- Roads**
- State Route
- County Road
- Town Road
- Village Street
- Other
- Water
- Streams
- Existing Residences**
- 1 Dot = 1

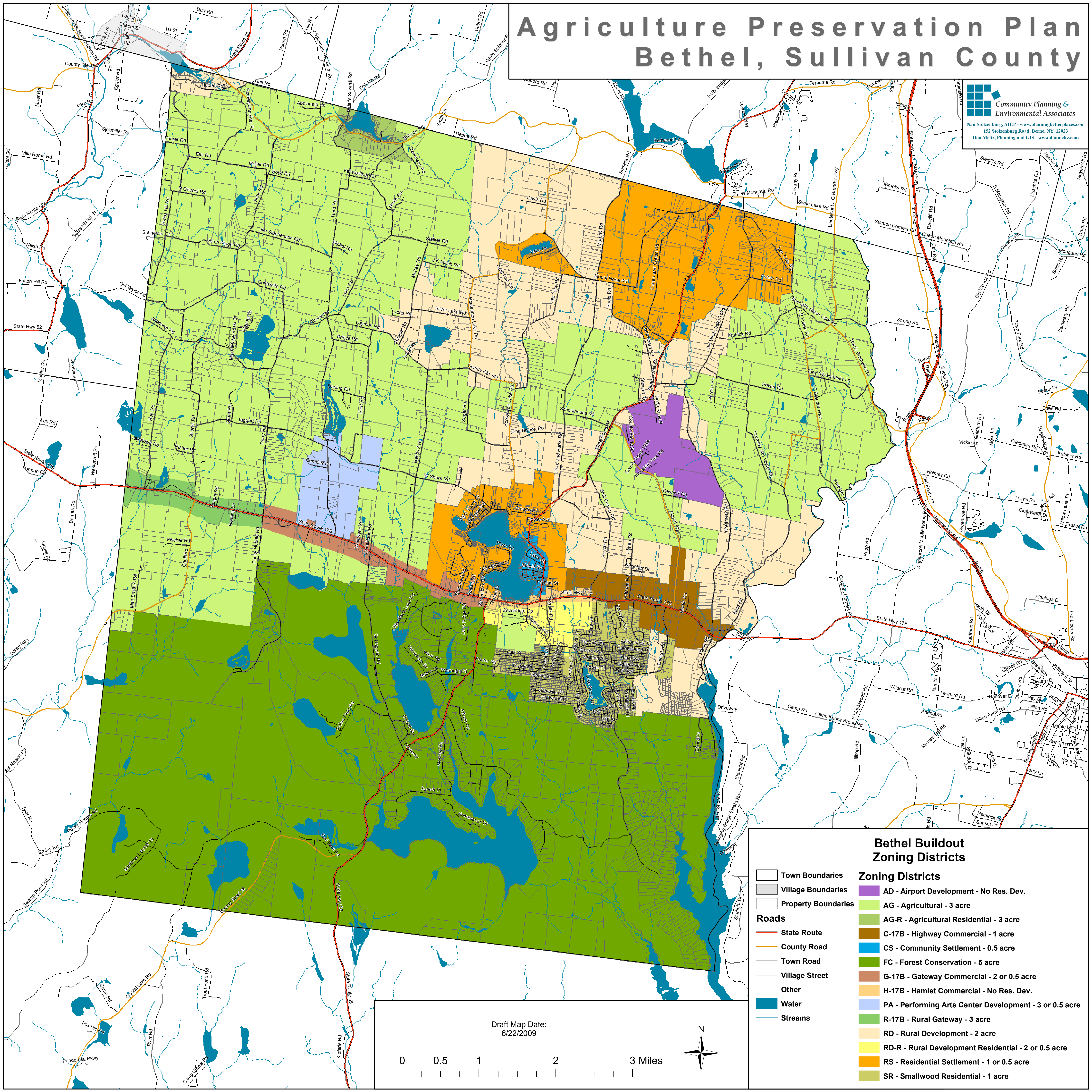
Draft Map Date:
6/22/2009

0 0.5 1 2 3 Miles



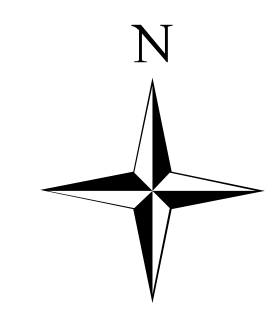
Agriculture Preservation Plan Bethel, Sullivan County

Community Planning & Environmental Associates
 Nan Stolzenburg, AICP - www.planningbetterplaces.com
 152 Stolzenburg Road, Berne, NY 12023
 Don Meltz, Planning and GIS - www.donmeltz.com



Draft Map Date:
6/22/2009

0 0.5 1 2 3 Miles

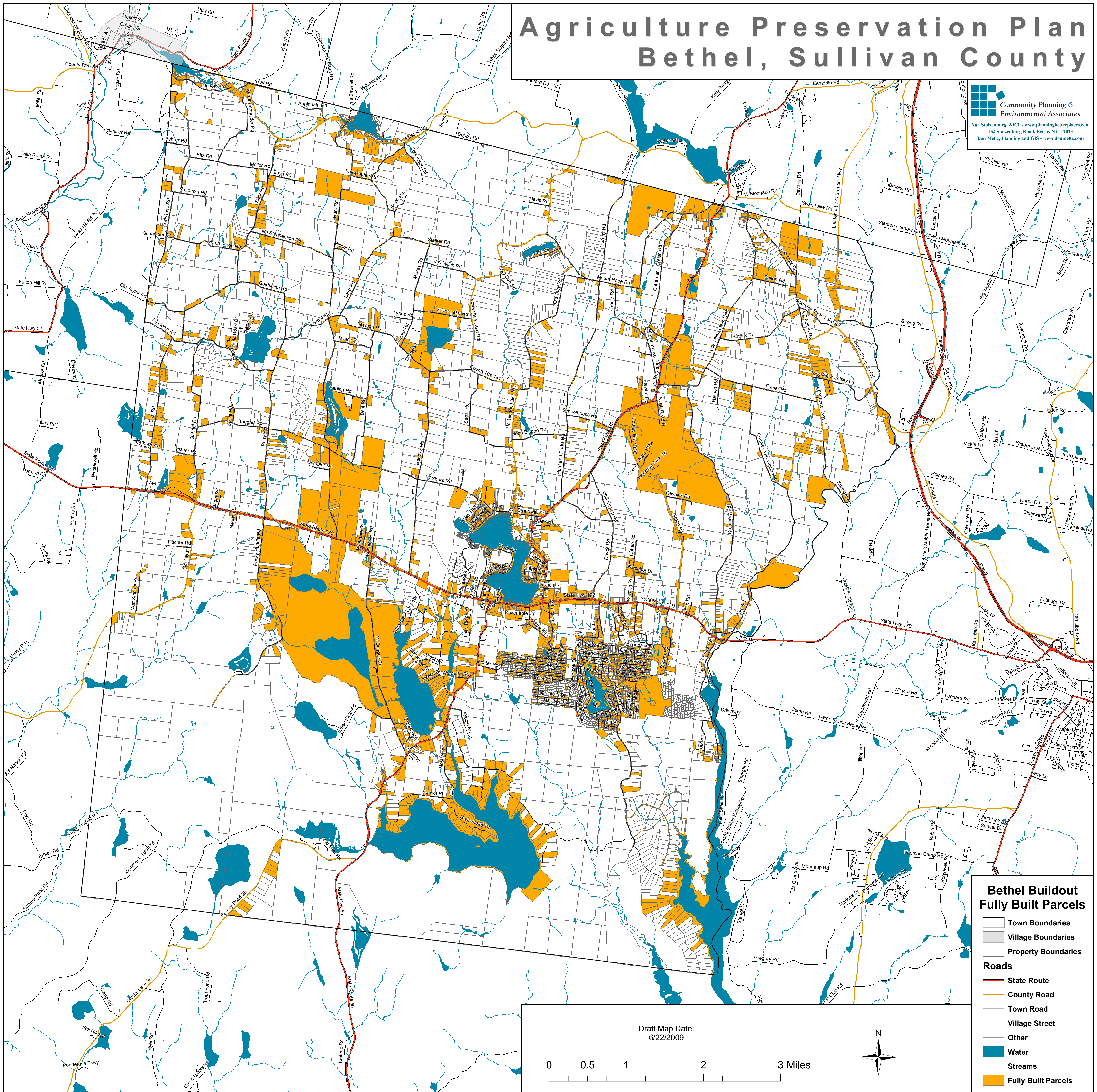


Bethel Buildout Zoning Districts

- | | | |
|---|--|---|
| Town Boundaries | Village Boundaries | Property Boundaries |
| Roads | | |
| State Route | County Road | Town Road |
| Village Street | Other | Water |
| Streams | Zoning Districts | |
| AD - Airport Development - No Res. Dev. | AG - Agricultural - 3 acre | AG-R - Agricultural Residential - 3 acre |
| C-17B - Highway Commercial - 1 acre | CS - Community Settlement - 0.5 acre | FC - Forest Conservation - 5 acre |
| G-17B - Gateway Commercial - 2 or 0.5 acre | H-17B - Hamlet Commercial - No Res. Dev. | PA - Performing Arts Center Development - 3 or 0.5 acre |
| R-17B - Rural Gateway - 3 acre | RD - Rural Development - 2 acre | RD-R - Rural Development Residential - 2 or 0.5 acre |
| RS - Residential Settlement - 1 or 0.5 acre | SR - Smallwood Residential - 1 acre | |

Agriculture Preservation Plan Bethel, Sullivan County

**Community Planning &
Environmental Associates**
Nan Stolzenburg, AICP - www.planningbetterplaces.com
152 Stolzenburg Road, Berne, NY 12023
Don Meltz, Planning and GIS - www.donmeltz.com

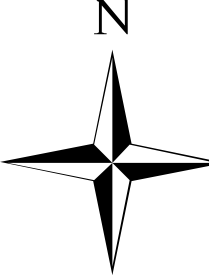


Bethel Buildout Fully Built Parcels

- Town Boundaries
- Village Boundaries
- Property Boundaries
- Roads**
 - State Route
 - County Road
 - Town Road
 - Village Street
 - Other
- Water
- Streams
- Fully Built Parcels

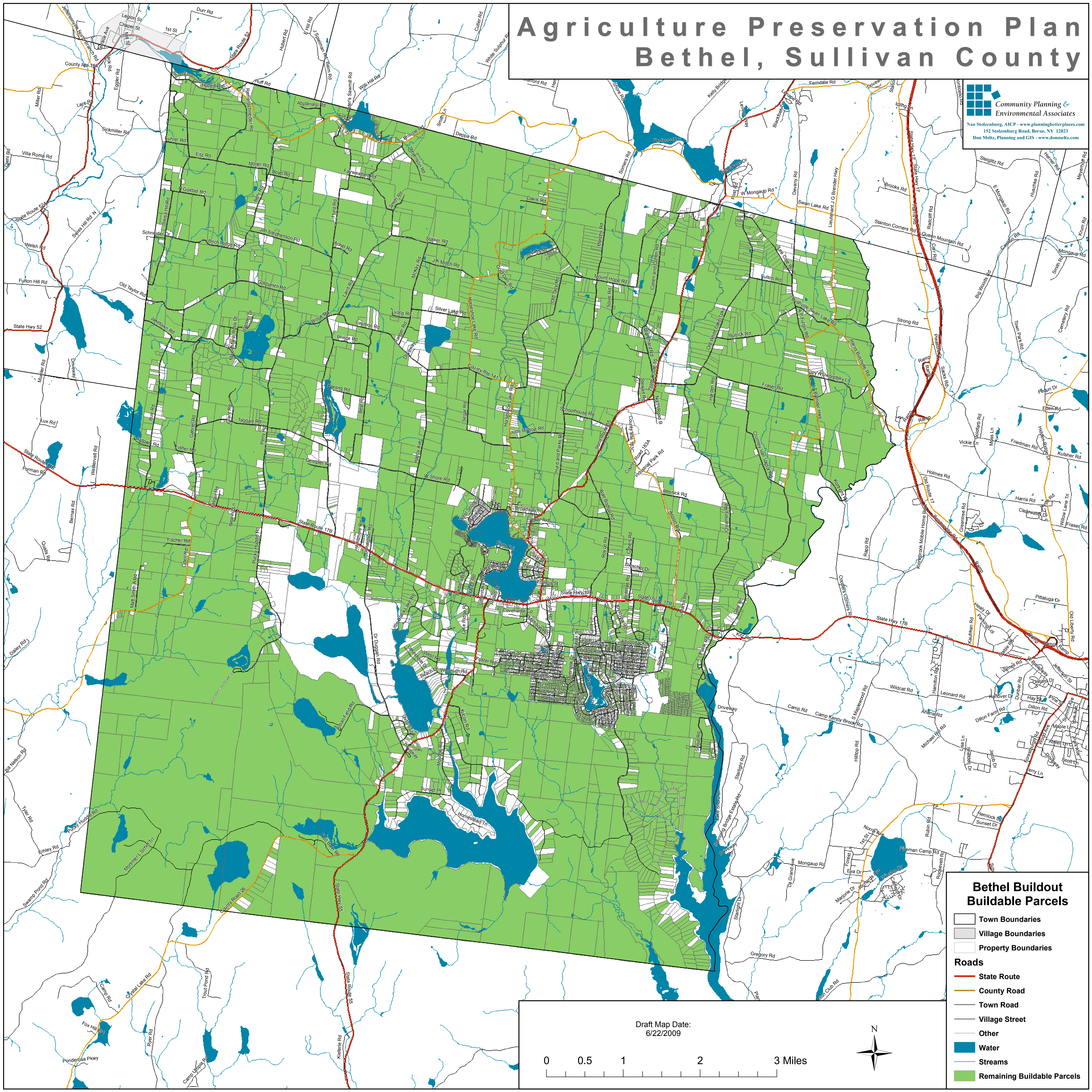
Draft Map Date:
6/22/2009

0 0.5 1 2 3 Miles



Agriculture Preservation Plan Bethel, Sullivan County

Community Planning & Environmental Associates
 Nan Stolzenburg, AICP - www.planningbetterplaces.com
 152 Stolzenburg Road, Berne, NY 12023
 Don Meltz, Planning and GIS - www.donmeltz.com



**Bethel Buildout
Buildable Parcels**

- Town Boundaries
- Village Boundaries
- Property Boundaries

Roads

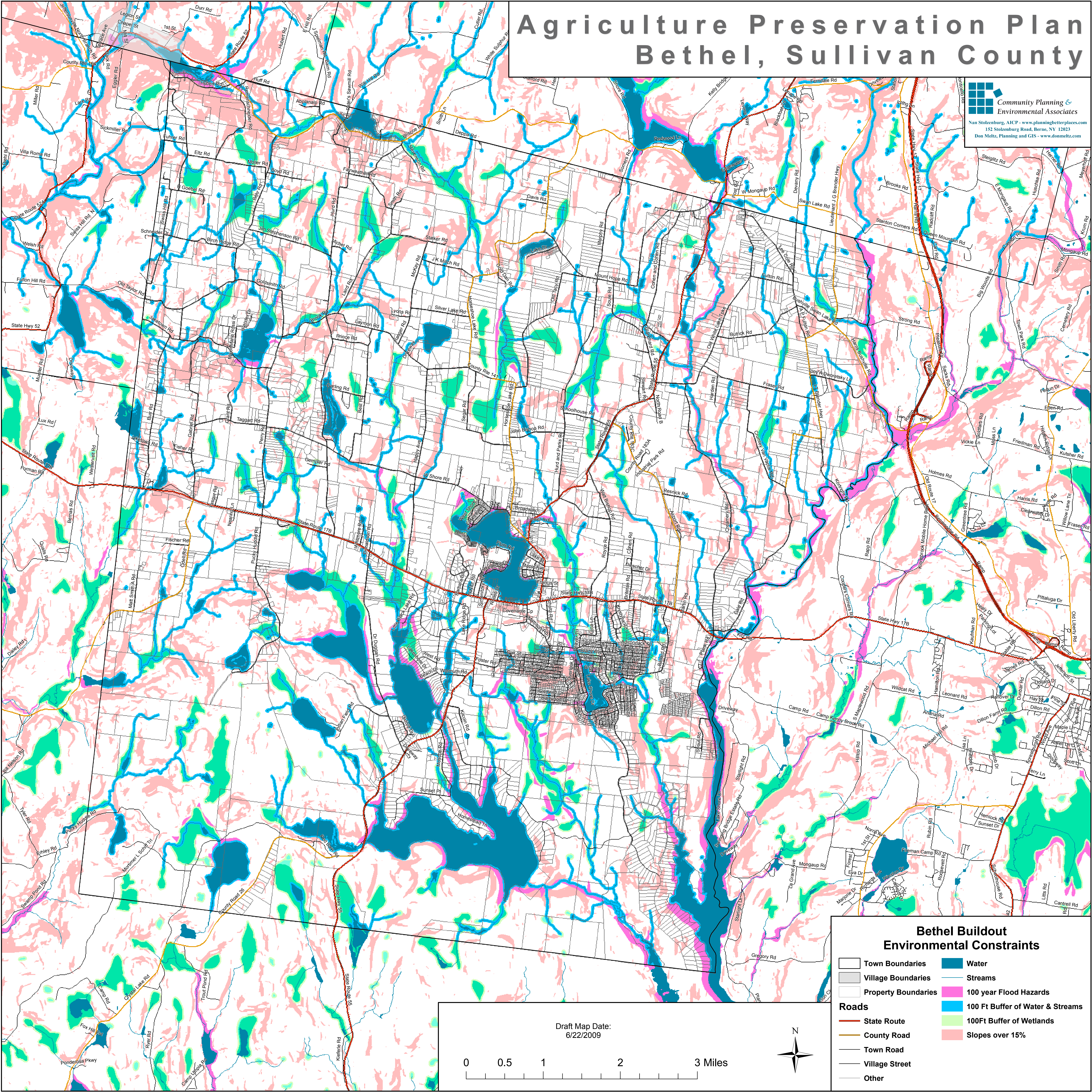
- State Route
- County Road
- Town Road
- Village Street
- Other
- Water
- Streams
- Remaining Buildable Parcels

Draft Map Date:
6/22/2009

0 0.5 1 2 3 Miles

Agriculture Preservation Plan Bethel, Sullivan County

Community Planning & Environmental Associates
 Nan Stolzenburg, AICP - www.planningbetterplaces.com
 152 Stolzenburg Road, Berne, NY 12023
 Don Metz, Planning and GIS - www.donmetz.com



Bethel Buildout Environmental Constraints

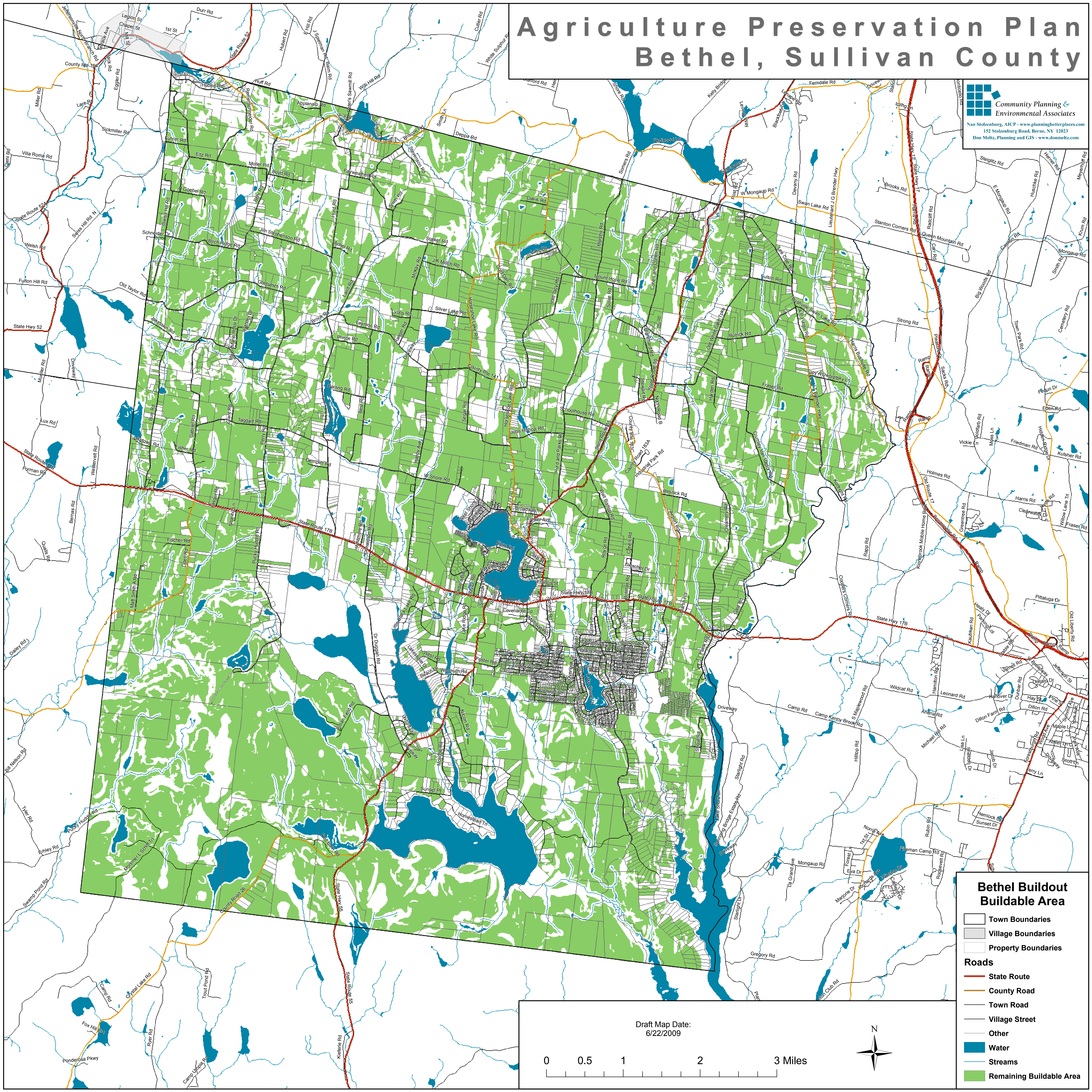
Town Boundaries	Water
Village Boundaries	Streams
Property Boundaries	100 year Flood Hazards
State Route	100 Ft Buffer of Water & Streams
County Road	100Ft Buffer of Wetlands
Town Road	Slopes over 15%
Village Street	
Other	

Draft Map Date:
6/22/2009

0 0.5 1 2 3 Miles

Agriculture Preservation Plan Bethel, Sullivan County

Community Planning & Environmental Associates
 Nan Stolzenburg, AICP - www.planningbetterplaces.com
 152 Stolzenburg Road, Berne, NY 12023
 Don Meltz, Planning and GIS - www.donmeltz.com



Bethel Buildout Buildable Area

- Town Boundaries
- Village Boundaries
- Property Boundaries

Roads

- State Route
- County Road
- Town Road
- Village Street
- Other

Water

- Water
- Streams
- Remaining Buildable Area

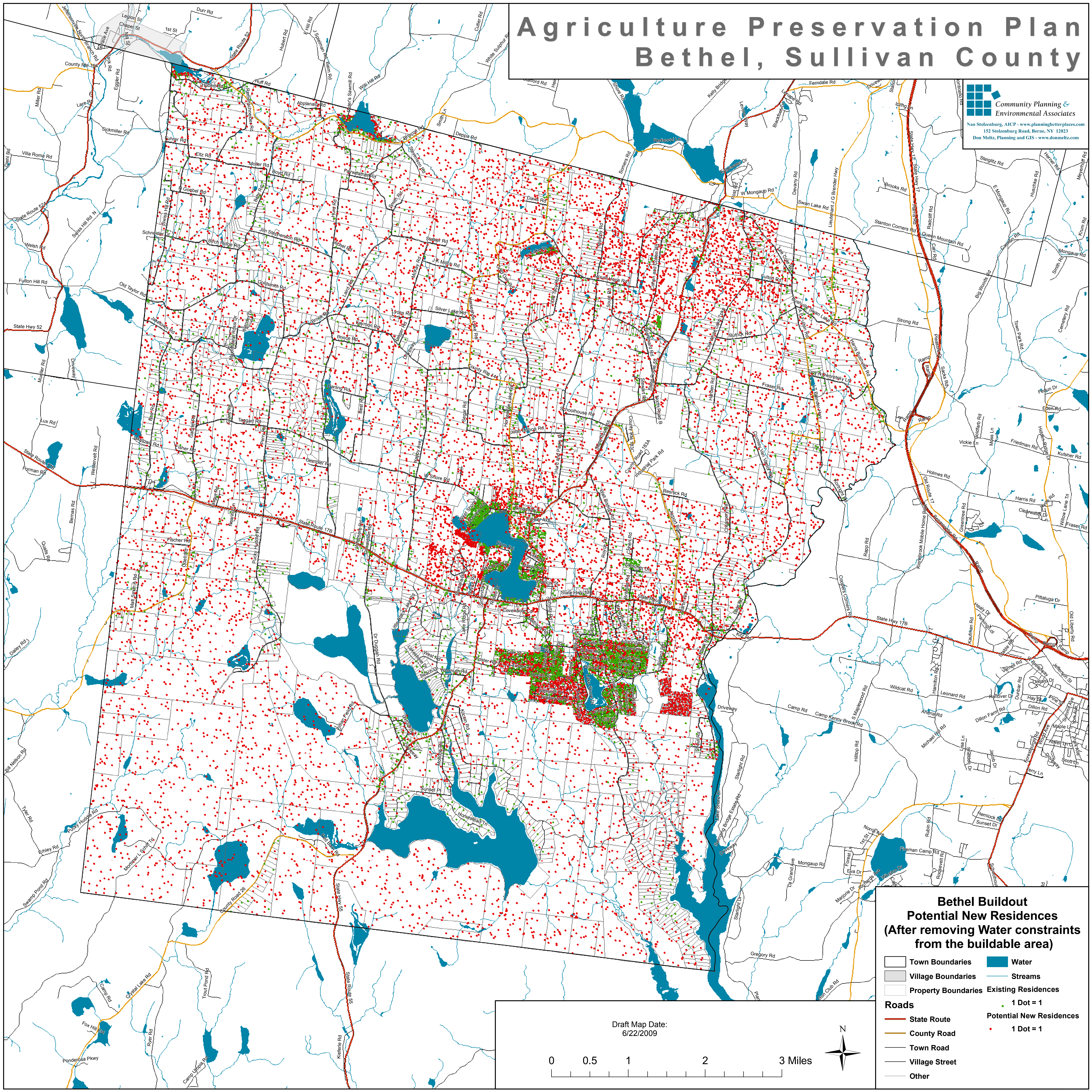
Draft Map Date:
6/22/2009

0 0.5 1 2 3 Miles

N

Agriculture Preservation Plan Bethel, Sullivan County

Community Planning & Environmental Associates
 Nan Stolzenburg, AICP - www.planningbetterplaces.com
 152 Stolzenburg Road, Berne, NY 12023
 Don Meltz, Planning and GIS - www.donmeltz.com



Bethel Buildout Potential New Residences (After removing Water constraints from the buildable area)

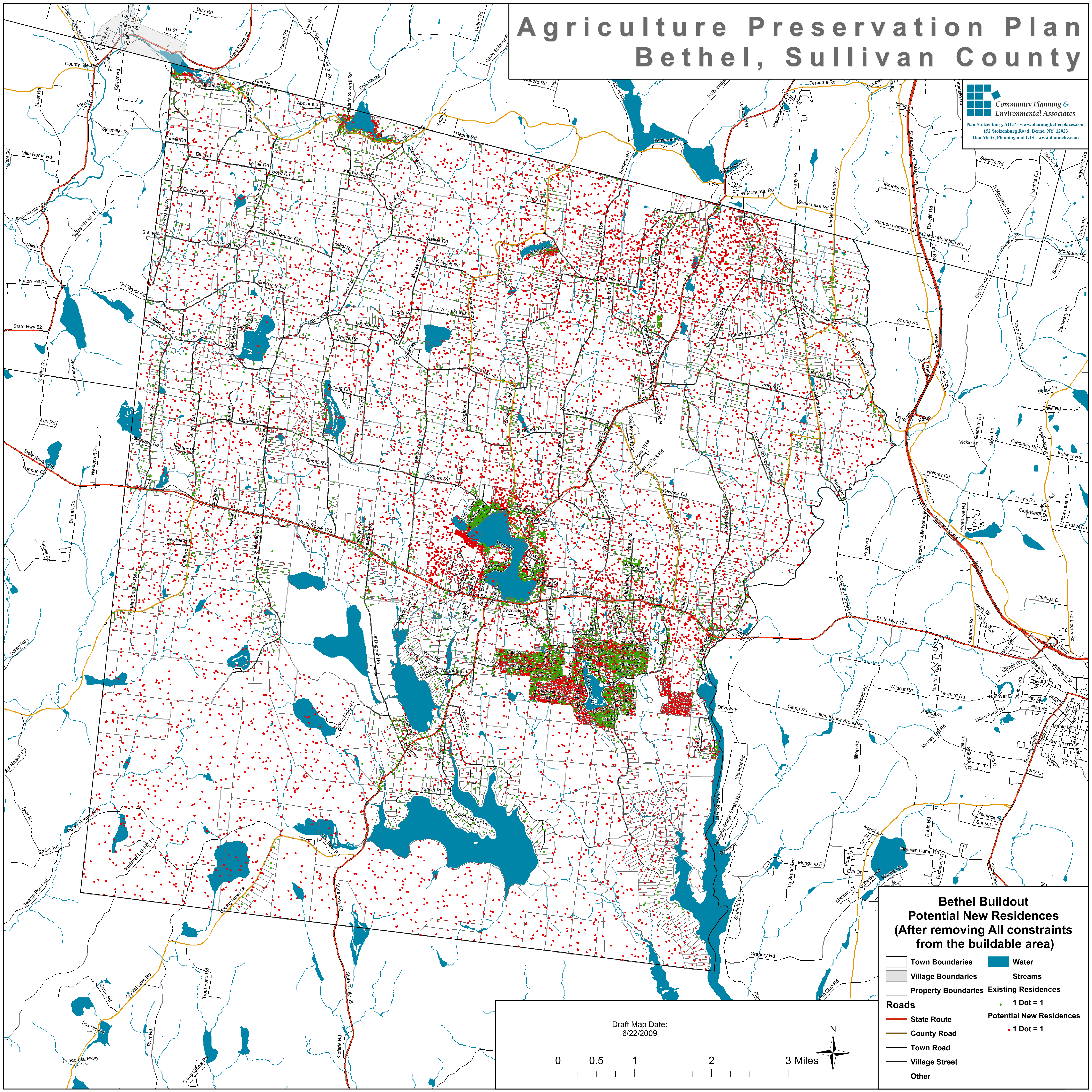
- Town Boundaries
 - Village Boundaries
 - Property Boundaries
 - Water
 - Streams
 - Existing Residences
 - Potential New Residences
- Roads**
- State Route
 - County Road
 - Town Road
 - Village Street
 - Other
- Scale:** 1 Dot = 1
1 Dot = 1

Draft Map Date:
6/22/2009

0 0.5 1 2 3 Miles

Agriculture Preservation Plan Bethel, Sullivan County

Community Planning & Environmental Associates
 Nan Stolzenburg, AICP - www.planningbetterplaces.com
 152 Stolzenburg Road, Berne, NY 12023
 Don Meltz, Planning and GIS - www.donmeltz.com



Bethel Buildout Potential New Residences (After removing All constraints from the buildable area)

- Town Boundaries
 - Village Boundaries
 - Property Boundaries
 - Water
 - Streams
 - Existing Residences
 - Potential New Residences
 - 1 Dot = 1
 - 1 Dot = 1
- Roads**
- State Route
 - County Road
 - Town Road
 - Village Street
 - Other

Draft Map Date:
6/22/2009

0 0.5 1 2 3 Miles

