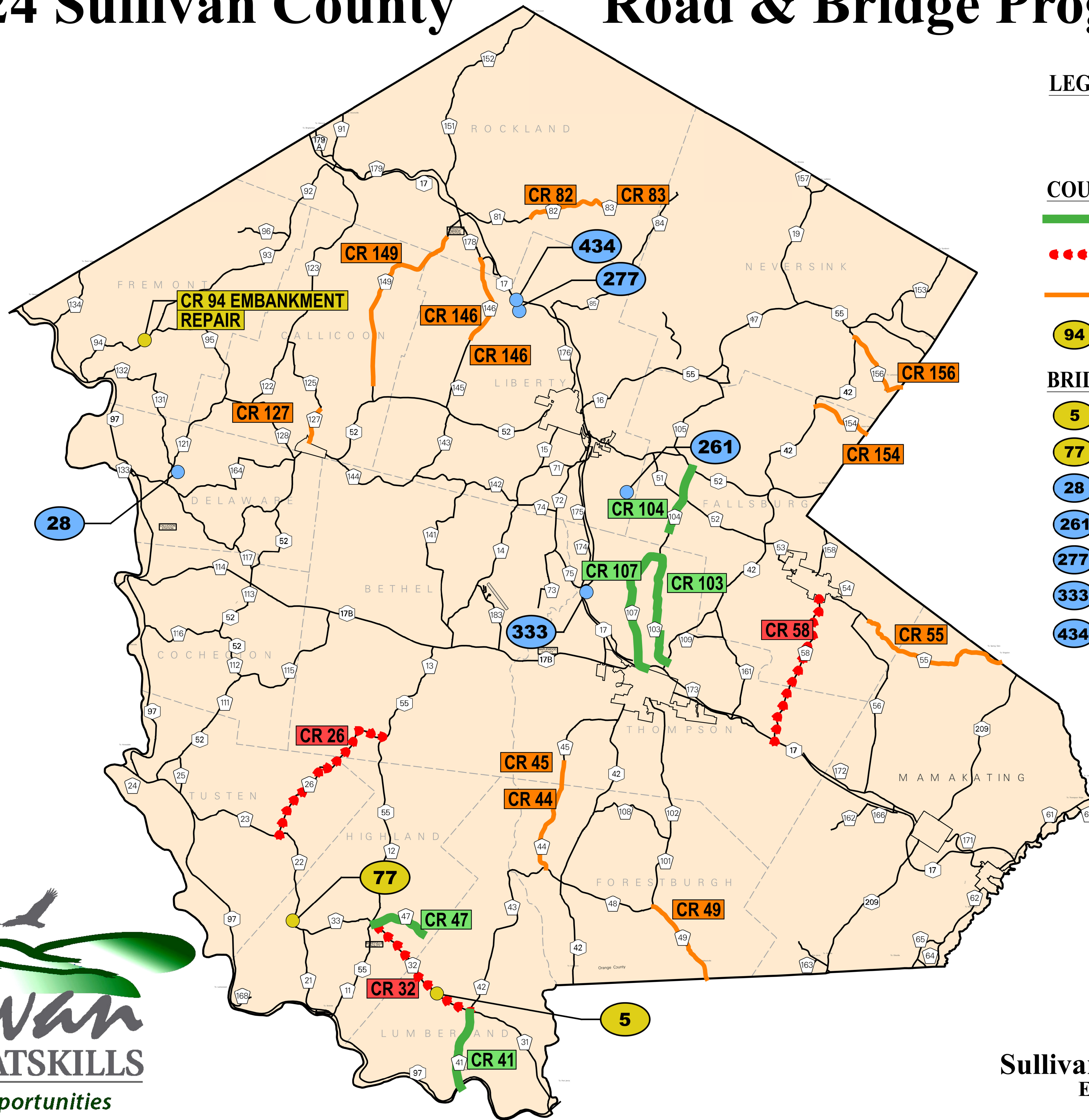
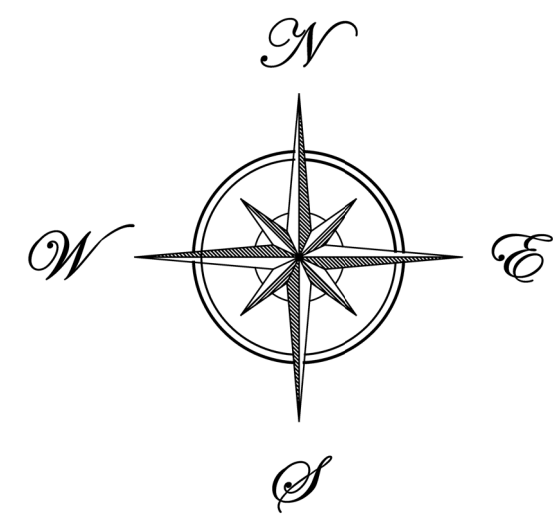


2024 Sullivan County Road & Bridge Program

Road & Bridge Program



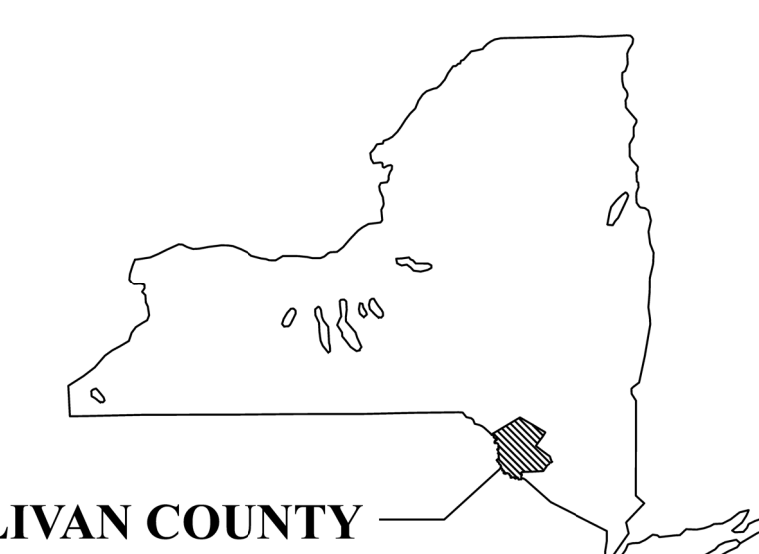
LEGEND: CR # = COUNTY ROAD NO.
 (100) = COUNTY BRIDGE NO.

COUNTY ROAD PROGRAM - APPROX. \$11 MIL.

- - CONTRACT PAVING (15.8 MILES) (INCL. PARTIAL DEPTH REPAIRS)
- - CONTRACT PAVING PARTIAL DEPTH REPAIRS ONLY (17.1 MILES)
- - CONTRACT SURFACE TREATMENT (36.7 MILES) (CRACK SEALING AND CHIP SEALING)
- 94 - EMBANKMENT REPAIR (CONSTRUCTED BY CONTRACT)

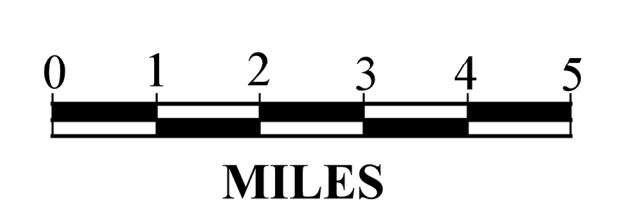
BRIDGE PROGRAM - APPROX. \$9.2 MIL.

- 5 - JOINT REPLACEMENT PROJECT (CONSTRUCTED BY CONTRACT)
- 77 - BRIDGE AND DAM SPILLWAY REPLACEMENT (CONSTRUCTED BY CONTRACT)
- 28 - CONCRETE DECK REPLACEMENT (BY DPW STAFF)
- 261 - FULL REPLACEMENT (BY DPW STAFF)
- 277 - ROAD RE-ALIGNMENT TO ELIMINATE BRIDGE (BY DPW STAFF)
- 333 - JOINT REPLACEMENT (BY DPW STAFF)
- 434 - CONCRETE DECK REPLACEMENT (BY DPW STAFF)



U.S. and STATE HIGHWAYS

COUNTY ROADS



Sullivan County Division of Public Works
 Edward McAndrew, P.E., Commissioner
 Department of Engineering