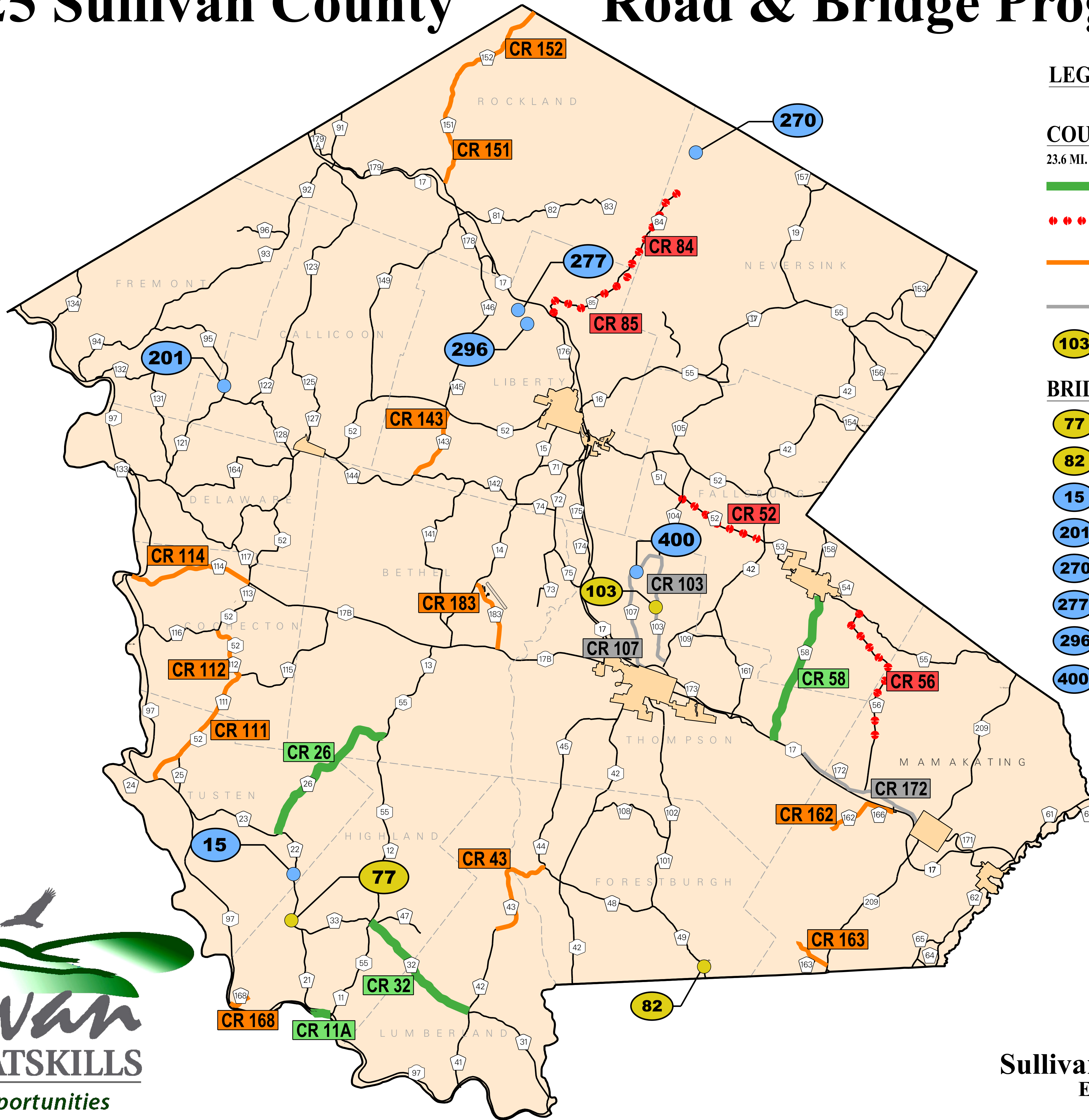
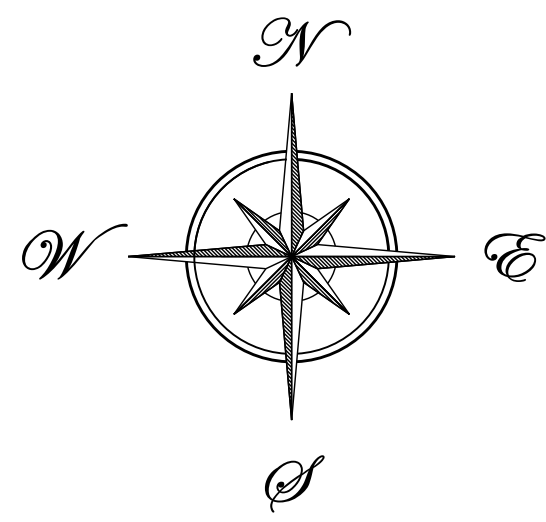


2025 Sullivan County

Road & Bridge Program



LEGEND: CR # = COUNTY ROAD NO.
 (100) = COUNTY BRIDGE NO.

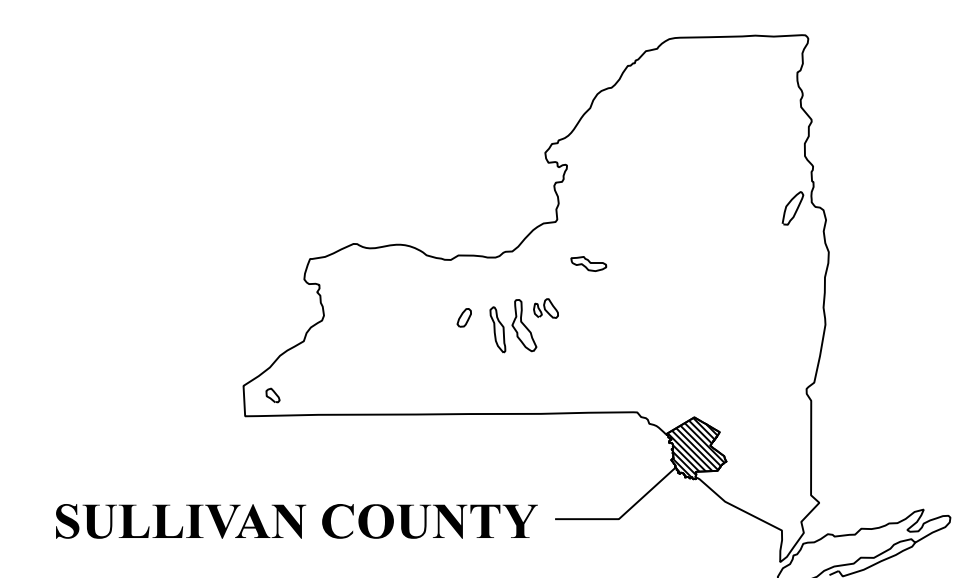
COUNTY ROAD PROGRAM - APPROX. \$12 MIL.

23.6 MI. OF CRACK SEALING NOT SHOWN FOR CLARITY

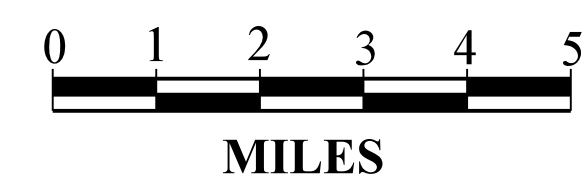
- - CONTRACT PAVING (17.8 MILES)
- ◆◆◆◆ - CONTRACT PAVING PARTIAL DEPTH REPAIRS ONLY (16.5 MILES)
- - CONTRACT SURFACE TREATMENT (36.3 MILES) (CRACK SEALING AND CHIP SEALING)
- - CONTRACT GUIDE RAIL REPLACEMENT (18,000 LF)
- 103 - RAISE ROAD ELEVATION (LOCALIZED AREA) (CONSTRUCTED BY CONTRACT)

BRIDGE PROGRAM - APPROX. \$11.4 MIL.

- 77 - BRIDGE AND DAM SPILLWAY REPLACEMENT (CONSTRUCTED BY CONTRACT)
- 82 - BRIDGE REPLACEMENT (CONSTRUCTED BY CONTRACT)
- 15 - SCOUR REPAIR (BY DPW STAFF)
- 201 - CURB AND RAIL REPLACEMENT (BY DPW STAFF)
- 270 - FULL REPLACEMENT (BY DPW STAFF)
- 277 - ROAD RE-ALIGNMENT TO ELIMINATE BRIDGE (BY DPW STAFF)
- 296 - FULL REPLACEMENT (BY DPW STAFF)
- 400 - PIPE ARCH SLIP-LINE (BY DPW STAFF)



U.S. and STATE HIGHWAYS 209 17 42
 COUNTY ROADS 171



Sullivan County Division of Public Works
 Edward McAndrew, P.E., Commissioner
 Department of Engineering