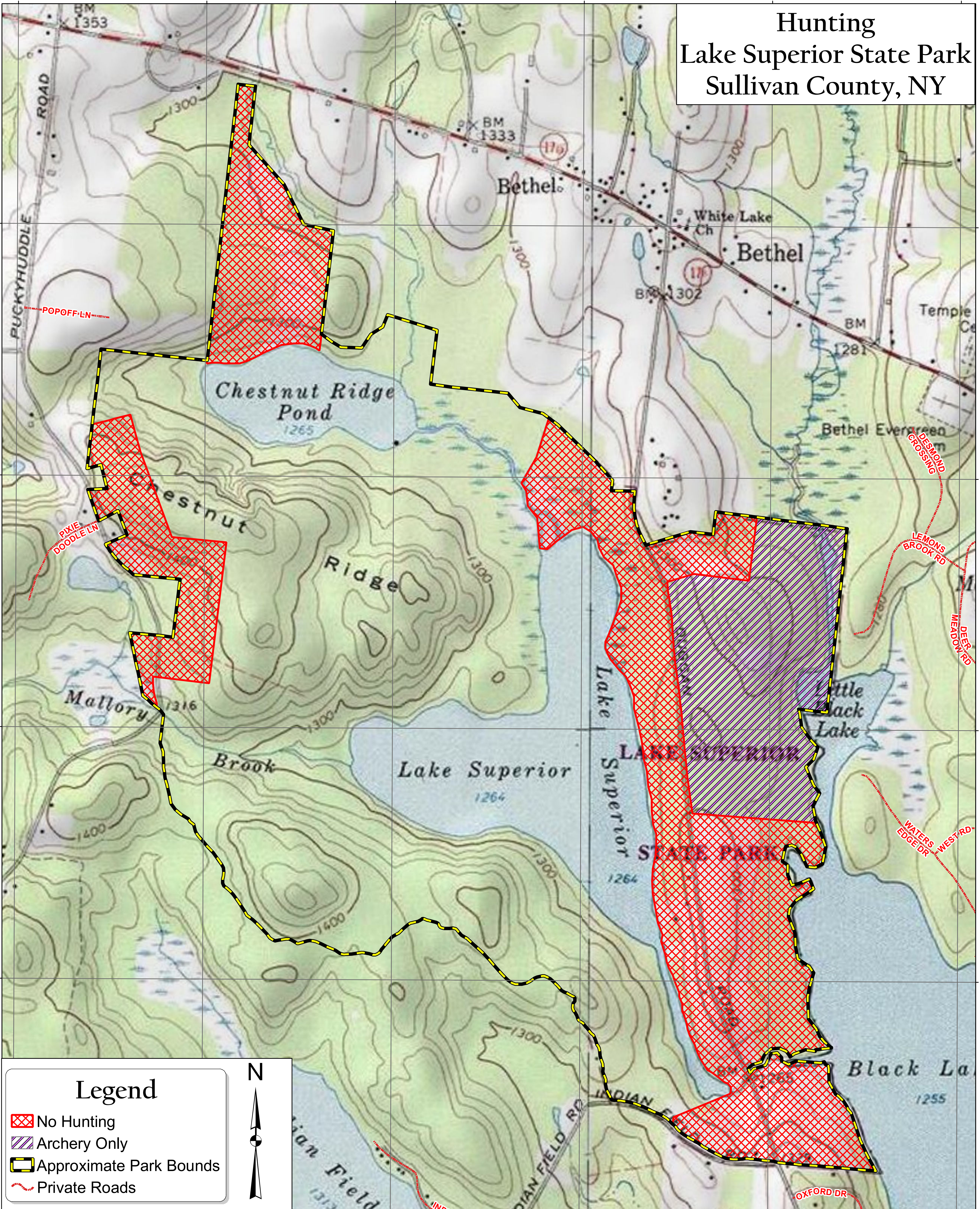


74°54'0"W 74°53'30"W 74°53'0"W 74°52'30"W 74°52'0"W 74°51'30"W

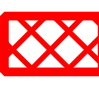
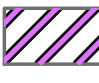


# Hunting Lake Superior State Park Sullivan County, NY

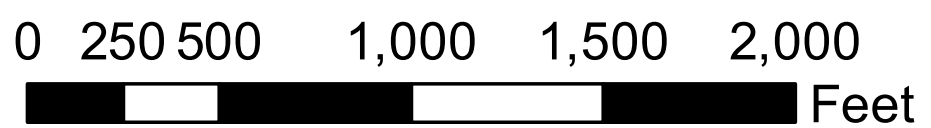
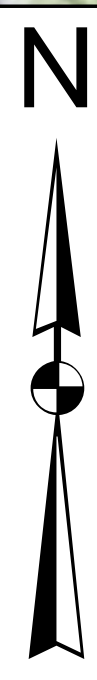
41°41'0"N  
41°40'30"N  
41°40'0"N  
41°39'30"N  
41°39'0"N


41°41'0"N  
41°40'30"N  
41°40'0"N  
41°39'30"N  
41°39'0"N



**Legend**

-  No Hunting
-  Archery Only
-  Approximate Park Bounds
-  Private Roads



 **Sullivan County Real Property Tax Services**  
 Date: 9/19/2017  
 Technician: *Chris Krapp*  
 100 North Street, Monticello, NY 12701 - (845) 807-0221 - Fax: (845) 807-0232

DISCLAIMER: SULLIVAN COUNTY MAKES NO REPRESENTATIONS AS TO THE ACCURACY OF THE INFORMATION IN THE MAPPING DATA. SULLIVAN COUNTY SPECIFICALLY PROVIDES THIS INFORMATION AS IS. SULLIVAN COUNTY EXPRESSLY DISCLAIMS RESPONSIBILITY FOR DAMAGES OR LIABILITY, WHATSOEVER, THAT MAY ARISE FROM THE USE OF THIS MAP.

74°54'0"W 74°53'30"W 74°53'0"W 74°52'30"W 74°52'0"W 74°51'30"W